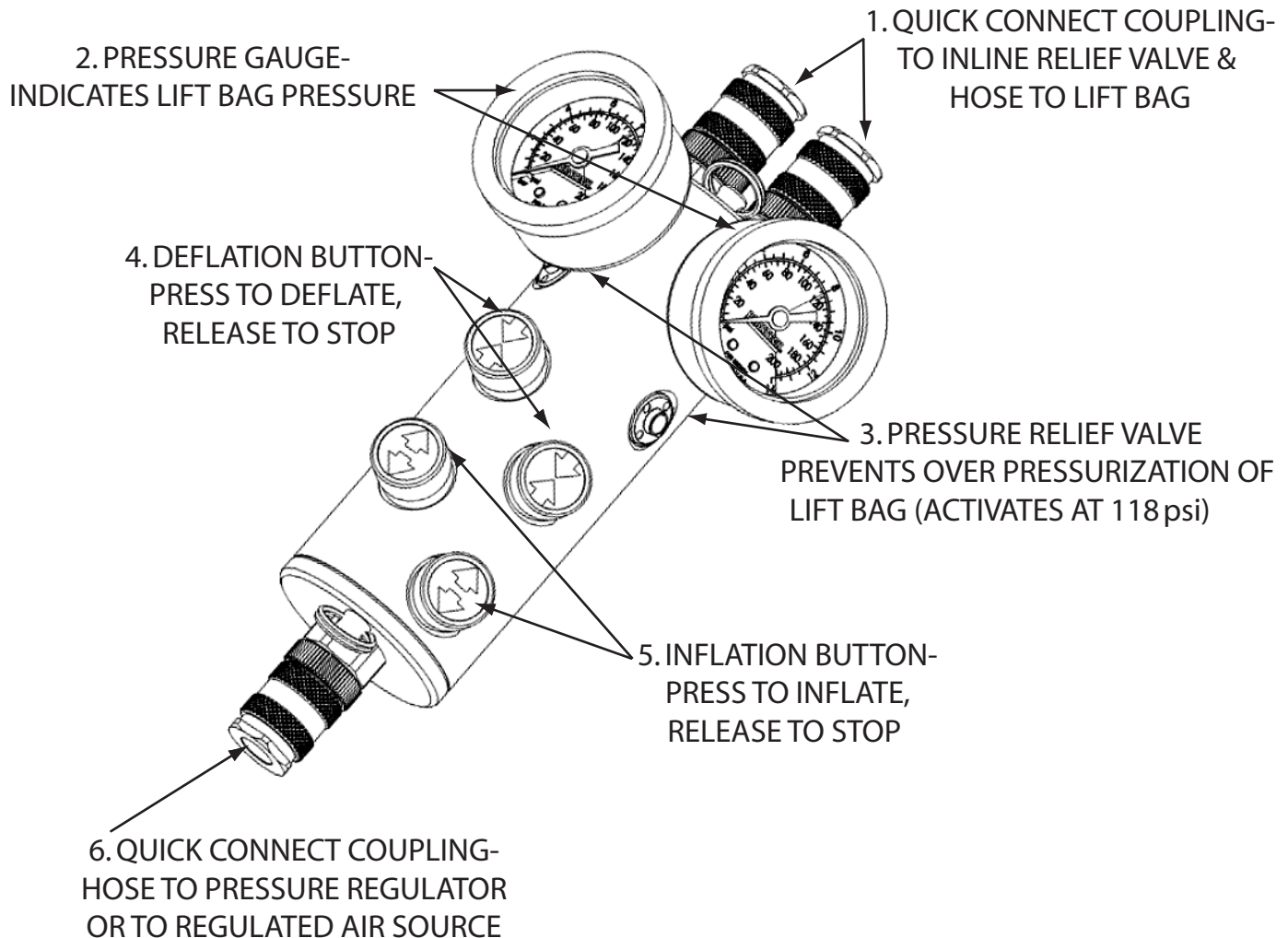


PRODUCT INFORMATION BULLETIN

22-890900

DUAL DEADMAN LIFT BAG CONTROLLER



**FOR COMPLETE OPERATING INSTRUCTIONS REFER TO PARATECH'S
MAXIFORCE OPERATING & INSTRUCTION MANUAL (P/N 22-890800)**

AND/OR

MAXIFORCE AIR LIFTING BAGS: USE, CARE & MAINTENANCE VIDEO (P/N 22-890000)

Paratech Incorporated

P.O. Box 1000, Frankfort, IL 60423 USA
Customer Service: 800.435.9358
Phone: 815.469.3911 Fax: 815.469.7748
www.paratech.us E-mail: paratech@paratech.us

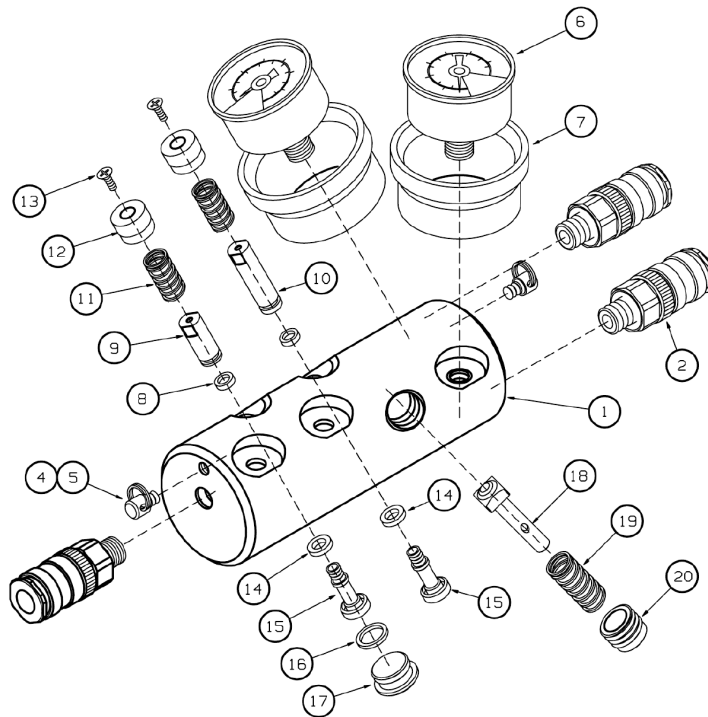
Paratech Europe, Branch of Paratech Inc.

P.O. Box 174, 5260 Odense S, Denmark
Phone: +45.66.11.24.22 Fax: +45.66.11.24.32
www.paratech.us Email: paratech@paratech.dk



ITEM	QTY	DESCRIPTION	P/N
1	1	BODY, DUAL DEADMAN	890905A
2	3	COUPLING 1/4" NPSM W/ O-RING	890721A
3	1	LABEL MAXIFORCE (NOT SHOWN)	890933
4	2	EYE BOLT	890932
5	2	RING, SPLIT	020199
6	2	GAUGE 2" 200 PSI	890604
7	2	GAUGE COVER 2"	890697
8	4	O-RING AS-011 (5/16x.070)	550170
9	2	STEM BODY SHORT, DEADMAN	890917
10	2	STEM BODY LONG, DEADMAN	890918
11	4	SPRING, BUTTON	890925
12	4	BUTTON	890910
13	4	SCREW #6 FLAT PHIL SOC HD SS	890930
14	4	TETRASEAL .310x.066x.134 LG	890940
15	4	STEM VALVE, DEADMAN	890919
16	2	O-RING	890946
17	2	PLUG	890945
18	2	STEM RELIEF, DEADMAN	890920M
19	2	SPRING 118 PSI REL. VALVE	890926
20	2	ADJUSTING SCREW, RELIEF	890921
21	2	LABELS, UP&DOWN SET (NOTSHOWN)	890934
22	1	CARRYING STRAP (NOTSHOWN)	890820
23	3	COUPLING PROTECTOR (NOTSHOWN)	890726

22-890900 DUAL DEADMAN LIFT BAG CONTROLLER parts list



Paratech Incorporated

P.O. Box 1000, Frankfort, IL 60423 USA
 Customer Service: 800.435.9358
 Phone: 815.469.3911 Fax: 815.469.7748
 www.paratech.us E-mail: paratech@paratech.us

Paratech Europe, Branch of Paratech Inc.

P.O. Box 174, 5260 Odense S, Denmark
 Phone: +45.66.11.24.22 Fax: +45.66.11.24.32
 www.paratech.us Email: paratech@paratech.dk

